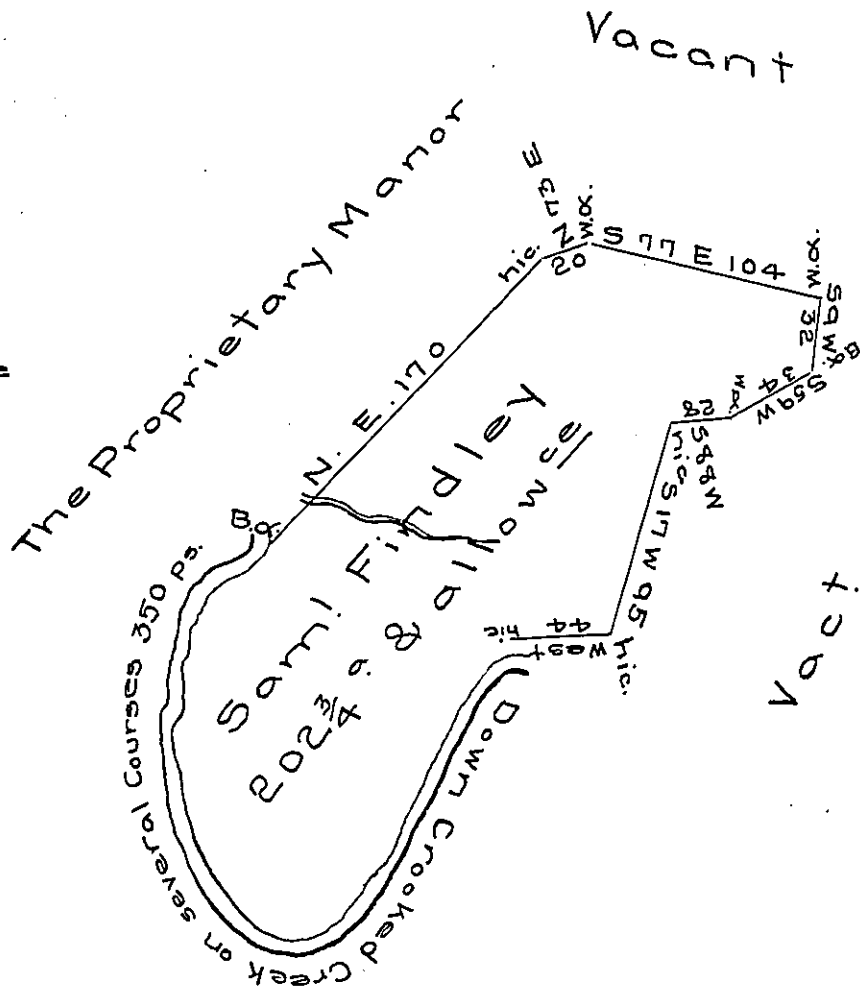


The Courses & distance
down the creek from
the hickory

S	42	W	38	ps.
S	30	W	90	
S	53	W	28	
Z	75	W	20	
Z	34	W	46	
Z	North		52	
Z	7	E	32	
Z	38	E	44	ps. to B.O.



Partnership.

Survey^d to Samuel Findley on the 2^d day of June 1770. Containing two hundred two acres & (obl.)ee quarters & the usual allowance of six ϕ ct. Situate on Crooked creek about two Miles from Allegheny—in Cumberland County. By order of the 3^d day of April 1769. N^o 2087.

ϕ Joshua Elder D.S.

To John Lukens Esq^r

S. Genl

IN TESTIMONY that the above is a copy of the original remaining on file in the Department of Internal Affairs of Pennsylvania, made conformably to an Act of Assembly approved the 16th day of February 1833, I have hereunto set my hand and caused the Seal of said Department to be affixed at Harrisburg, this twentieth day of February 1907.

Isaac R. Brown
Secretary of Internal Affairs.